



TEST REPORT

Applicant : Shenzhen Huafurui Technology Co., Ltd.
Address : Unit 601-03, 6/F, Block A, Building 1, Ganfeng Technology Building, No. 993
Jiaxian Road, Xiangjiaotang Community, Bantian Street, Longgang
District, Shenzhen, P.R. China

Report on the submitted samples said to be:

Sample Name(s) : Smartphone
Trade Mark : CUBOT
Tested Model No. : KINGKONG STAR 2
Sample Received Date : July 12, 2024
Testing Period : July 12, 2024 ~ July 18, 2024
Date of Report : July 18, 2024
Testing Location : 901, No.40 Building, Xialang Industrial Zone, Heshuikou Community,
Matian Street, Guangming District, Shenzhen, Guangdong, China
Results : Please refer to next page(s).

TEST REQUEST	CONCLUSION
As specified by client, based on the performed tests on submitted sample, the result of Lead(Pb), Cadmium(Cd), Mercury(Hg), Hexavalent Chromium(Cr(VI)), PBBs, PBDEs, Dibutyl Phthalate(DBP), Butylbenzyl Phthalate(BBP), Di-2-ethylhexyl Phthalate(DEHP) and Diisobutyl phthalate(DIBP) content comply with the limits set by RoHS Directive 2011/65/EU with amendment (EU) 2015/863.	PASS

Signed for and on behalf of LCS

Terry Luo

TRF-4-R-027 A/0



Shenzhen LCS Compliance Testing Laboratory Ltd.
Add: 901, No.40 Building, Xialang Industrial Zone, Heshuikou Community, Matian Street, Guangming District,
Shenzhen, Guangdong, China
Tel: +(86) 0755-82591330 | E-mail: webmaster@lcs-cert.com | Web: www.lcs-cert.com
Scan code to check authenticity

**A. EU RoHS Directive 2011/65/EU and its amendment directives**

Test method: Refer to IEC 62321-1:2013&IEC 62321-2:2021&IEC 62321-3-1:2013, Screening by X-ray Fluorescence Spectroscopy (XRF).

Test result(s):

Sample No.	Sample Description	Screening Result(s)						Date of sample submission/ Resubmission
		Cd	Pb	Hg	Cr [▼]	Br [▼]		
						PBBs	PBDEs	
1	Silver gray metal frame	BL	BL	BL	BL	/	/	2024-07-12
2	Glass sheet	BL	BL	BL	BL	BL	BL	2024-07-12
3	Silver gray metal sheet	BL	BL	BL	BL	/	/	2024-07-12
4	Black plastic shell	BL	BL	BL	BL	BL	BL	2024-07-12
5	Light white plastic sheet	BL	BL	BL	BL	BL	BL	2024-07-12
6	Light black metal button	BL	BL	BL	BL	/	/	2024-07-12
7	Black soft plastic	BL	BL	BL	BL	BL	BL	2024-07-12
8	Black glass	BL	BL	BL	BL	BL	BL	2024-07-12
9	Silver glass	BL	BL	BL	BL	BL	BL	2024-07-12
10	Silver colored plastic sheet	BL	BL	BL	BL	BL	BL	2024-07-12
11	White plastic sheet	BL	BL	BL	BL	BL	BL	2024-07-12
12	Silver white plastic sheet	BL	BL	BL	BL	BL	BL	2024-07-12
13	Transparent plastic sheet	BL	BL	BL	BL	BL	BL	2024-07-12
14	Matte colored plastic sheet	BL	BL	BL	BL	BL	BL	2024-07-12
15	Silver gray metal sheet	BL	BL	BL	BL	/	/	2024-07-12
16	White LED beads	BL	BL	BL	BL	BL	BL	2024-07-12
17	Grey adhesive tape	BL	BL	BL	BL	BL	BL	2024-07-12
18	Dark gray adhesive tape	BL	BL	BL	BL	BL	BL	2024-07-12
19	Black adhesive tape	BL	BL	BL	BL	BL	BL	2024-07-12
20	Golden ribbon cable	BL	BL	BL	BL	BL	BL	2024-07-12
21	Orange plastic	BL	BL	BL	BL	BL	BL	2024-07-12
22	Silver metal sheet	BL	BL	BL	BL	/	/	2024-07-12
23	Black plastic sheet	BL	BL	BL	BL	BL	BL	2024-07-12
24	Silver metal sheet	BL	BL	BL	BL	/	/	2024-07-12
25	Silver magnet	BL	BL	BL	BL	/	/	2024-07-12
26	Golden metal wire	BL	BL	BL	BL	/	/	2024-07-12

TRF-4-R-027 A/0



Shenzhen LCS Compliance Testing Laboratory Ltd.

Add: 901, No.40 Building, Xialang Industrial Zone, Heshuikou Community, Matian Street, Guangming District, Shenzhen, Guangdong, China

Tel: +(86) 0755-82591330 | E-mail: webmaster@lcs-cert.com | Web: www.lcs-cert.com

Scan code to check authenticity



Sample No.	Sample Description	Screening Result(s)						Date of sample submission/ Resubmission
		Cd	Pb	Hg	Cr [▼]	Br [▼]		
						PBBs	PBDEs	
27	Transparent plastic film	BL	BL	BL	BL	BL	BL	2024-07-12
28	Silver gray metal sheet	BL	BL	BL	BL	/	/	2024-07-12
29	Golden metal	BL	BL	BL	BL	/	/	2024-07-12
30	Black plastic sheet	BL	BL	BL	BL	BL	BL	2024-07-12
31	Silver gray plastic	BL	BL	BL	BL	BL	BL	2024-07-12
32	Silver metal sheet	BL	BL	BL	BL	/	/	2024-07-12
33	Silver metal sheet	BL	BL	BL	BL	/	/	2024-07-12
34	Silver metal	BL	BL	BL	BL	/	/	2024-07-12
35	Silver magnet	BL	BL	BL	BL	/	/	2024-07-12
36	Golden metal wire	BL	BL	BL	BL	/	/	2024-07-12
37	Silver plastic film	BL	BL	BL	BL	BL	BL	2024-07-12
38	Black adhesive tape	BL	BL	BL	BL	BL	BL	2024-07-12
39	Silver metal	BL	BL	BL	BL	/	/	2024-07-12
40	Focusing on Glass	BL	BL	BL	BL	BL	BL	2024-07-12
41	Black plastic	BL	BL	BL	BL	BL	BL	2024-07-12
42	Golden metal wire	BL	BL	BL	BL	/	/	2024-07-12
43	Silver metal sheet	BL	BL	BL	BL	/	/	2024-07-12
44	Silver metal shell	BL	BL	BL	BL	/	/	2024-07-12
45	Silver metal sheet	BL	BL	BL	BL	/	/	2024-07-12
46	Black magnet	BL	BL	BL	BL	/	/	2024-07-12
47	PCB board	BL	BL	BL	BL	BL	BL	2024-07-12
48	Silver metal sheet	BL	BL	BL	BL	/	/	2024-07-12
49	Black plastic sheet	BL	BL	BL	BL	BL	BL	2024-07-12
50	Silver metal sheet	BL	BL	BL	BL	/	/	2024-07-12
51	Golden metal needle	BL	BL	BL	BL	/	/	2024-07-12
52	Golden foil paper	BL	BL	BL	BL	/	/	2024-07-12
53	Silver metal sheet	BL	BL	BL	BL	/	/	2024-07-12
54	Silver metal	BL	BL	BL	BL	/	/	2024-07-12
55	Black plastic	BL	BL	BL	BL	BL	BL	2024-07-12
56	Golden metal wire	BL	BL	BL	BL	/	/	2024-07-12
57	Transparent glass	BL	BL	BL	BL	BL	BL	2024-07-12
58	Golden plastic sheet	BL	BL	BL	BL	BL	BL	2024-07-12
59	Silver plastic film	BL	BL	BL	BL	BL	BL	2024-07-12
60	Black IC	BL	BL	BL	BL	BL	BL	2024-07-12

TRF-4-R-027 A/0



Shenzhen LCS Compliance Testing Laboratory Ltd.

Add: 901, No.40 Building, Xialang Industrial Zone, Heshuikou Community, Matian Street, Guangming District, Shenzhen, Guangdong, China

Tel: +(86) 0755-82591330 | E-mail: webmaster@lcs-cert.com | Web: www.lcs-cert.com

Scan code to check authenticity



Sample No.	Sample Description	Screening Result(s)						Date of sample submission/ Resubmission
		Cd	Pb	Hg	Cr [▼]	Br [▼]		
						PBBs	PBDEs	
61	PCB board	BL	BL	BL	BL	BL	BL	2024-07-12
62	Silver gray metal sheet	BL	BL	BL	BL	/	/	2024-07-12
63	Silver metal screw	BL	BL	BL	BL	/	/	2024-07-12
64	Black metal screw	BL	BL	BL	BL	/	/	2024-07-12
65	Black plastic wire cover	BL	BL	BL	BL	BL	BL	2024-07-12
66	Silver metal wire	BL	BL	BL	BL	/	/	2024-07-12
67	White plastic shell	BL	BL	BL	BL	BL	BL	2024-07-12
68	Silver metal needle	BL	BL	BL	BL	/	/	2024-07-12
69	Black plastic sheet	BL	BL	BL	BL	BL	BL	2024-07-12
70	Silver metal sheet	BL	BL	BL	BL	/	/	2024-07-12
71	Blue capacitor	BL	BL	BL	BL	BL	BL	2024-07-12
72	Black plastic cover	BL	BL	BL	BL	BL	BL	2024-07-12
73	Black thermistor	BL	BL	BL	BL	BL	BL	2024-07-12
74	Yellow capacitor	BL	BL	BL	BL	BL	BL	2024-07-12
75	Grey gel	BL	BL	BL	BL	BL	BL	2024-07-12
76	Brown plastic film	BL	BL	BL	BL	BL	BL	2024-07-12
77	Silver metal shell	BL	BL	BL	BL	/	/	2024-07-12
78	Transparent adhesive	BL	BL	BL	BL	BL	BL	2024-07-12
79	Silver metal sheet	BL	BL	BL	BL	/	/	2024-07-12
80	Grey metal sheet	BL	BL	BL	BL	/	/	2024-07-12
81	Brown paper	BL	BL	BL	BL	BL	BL	2024-07-12
82	Black plastic sheet	BL	BL	BL	BL	BL	BL	2024-07-12
83	Silver metal sheet	BL	BL	BL	BL	/	/	2024-07-12
84	Yellow tape	BL	BL	BL	BL	BL	BL	2024-07-12
85	Black ceramic	BL	BL	BL	BL	BL	BL	2024-07-12
86	Golden metal wire	BL	BL	BL	BL	/	/	2024-07-12
87	Black plastic wire cover	BL	BL	BL	BL	BL	BL	2024-07-12
88	Light white plastic wire cover	BL	BL	BL	BL	BL	BL	2024-07-12
89	Brown plastic	BL	BL	BL	BL	BL	BL	2024-07-12
90	Black plastic	BL	BL	BL	BL	BL	BL	2024-07-12
91	Silver metal wire	BL	BL	BL	BL	/	/	2024-07-12
92	White fiber silk	BL	BL	BL	BL	BL	BL	2024-07-12
93	Silver metal pins	BL	BL	BL	BL	/	/	2024-07-12

TRF-4-R-027 A/0



Shenzhen LCS Compliance Testing Laboratory Ltd.

Add: 901, No.40 Building, Xialang Industrial Zone, Heshuikou Community, Matian Street, Guangming District, Shenzhen, Guangdong, China

Tel: +(86) 0755-82591330 | E-mail: webmaster@lcs-cert.com | Web: www.lcs-cert.com

Scan code to check authenticity



Sample No.	Sample Description	Screening Result(s)						Date of sample submission/ Resubmission
		Cd	Pb	Hg	Cr ^{VI}	Br ^{VI}		
						PBBs	PBDEs	
94	Tin solder	BL	BL	BL	BL	/	/	2024-07-12
95	PCB board	BL	BL	BL	BL	BL	BL	2024-07-12
96	Black IC	BL	BL	BL	BL	BL	BL	2024-07-12
97	Silver metal sheet	BL	BL	BL	BL	/	/	2024-07-12
98	White plastic	BL	BL	BL	BL	BL	BL	2024-07-12
99	White plastic wire cover	BL	BL	BL	BL	BL	BL	2024-07-12
100	White plastic sheet	BL	BL	BL	BL	BL	BL	2024-07-12
101	White plastic wire cover	BL	BL	BL	BL	BL	BL	2024-07-12
102	White plastic shell	BL	BL	BL	BL	BL	BL	2024-07-12
103	Silver metal	BL	BL	BL	BL	/	/	2024-07-12
104	Green adhesive tape	BL	BL	BL	BL	BL	BL	2024-07-12
105	White plastic shell	BL	BL	BL	BL	BL	BL	2024-07-12
106	Enameled wire	BL	BL	BL	BL	/	/	2024-07-12
107	Blue PCB board	BL	BL	BL	BL	BL	BL	2024-07-12
108	Silver metal sheet	BL	BL	BL	BL	/	/	2024-07-12
109	Golden metal	BL	BL	BL	BL	/	/	2024-07-12
110	Battery (silver gray plastic skin)	BL	BL	BL	BL	BL	BL	2024-07-12

Note:

- Results were obtained by XRF for primary screening, and further chemical testing by ICP(for Cd, Pb, Hg), UV-Vis(for Cr(VI)) and GC-MS(for PBBs, PBDEs) are recommended to be performed, if the concentration exceeds the below warning value according to IEC 62321-3-1:2013(Unit: mg/kg).

Element	Polymers	Metals	Composite material
Cd	$BL \leq (70-3\sigma) < X < (130+3\sigma) \leq OL$	$BL \leq (70-3\sigma) < X < (130+3\sigma) \leq OL$	$LOD < X < (150+3\sigma) \leq OL$
Pb	$BL \leq (700-3\sigma) < X < (1300+3\sigma) \leq OL$	$BL \leq (700-3\sigma) < X < (1300+3\sigma) \leq OL$	$BL \leq (500-3\sigma) < X < (1500+3\sigma) \leq OL$
Hg	$BL \leq (700-3\sigma) < X < (1300+3\sigma) \leq OL$	$BL \leq (700-3\sigma) < X < (1300+3\sigma) \leq OL$	$BL \leq (500-3\sigma) < X < (1500+3\sigma) \leq OL$
Cr	$BL \leq (700-3\sigma) < X$	$BL \leq (700-3\sigma) < X$	$BL \leq (500-3\sigma) < X$
Br	$BL \leq (300-3\sigma) < X$	N/A	$BL \leq (250-3\sigma) < X$

Remark:

- BL= Below Limit
- OL= Over Limit
- X= The range of needing to do further testing
- 3σ= The reproducibility of analytical instruments
- N/A= Not applicable
- LOD= Detection limit

TRF-4-R-027 A/0



Shenzhen LCS Compliance Testing Laboratory Ltd.
 Add: 901, No.40 Building, Xialang Industrial Zone, Heshuikou Community, Matian Street, Guangming District, Shenzhen, Guangdong, China
 Tel: +(86) 0755-82591330 | E-mail: webmaster@lcs-cert.com | Web: www.lcs-cert.com
 Scan code to check authenticity



2. The XRF screening test for RoHS elements – The reading may be different to the actual content in the sample be of non-uniformity composition.
3. The maximum permissible limit is quoted from the document RoHS Directive 2011/65/EU with amendment (EU) 2015/863.
4. ▼=For restricted substances PBBs and PBDEs, the results show the total Br content, the restricted substance was Cr(VI), and the results showed the total Cr content.

RoHS Restricted Substances	Maximum Concentration Value (mg/kg) (by weight in homogenous materials)
Cadmium(Cd)	100
Lead(Pb)	1000
Mercury(Hg)	1000
Hexavalent Chromium(Cr(VI))	1000
Polybrominated biphenyls(PBBs)	1000
Polybrominated diphenylethers(PBDEs)	1000
Dibutyl Phthalate(DBP)	1000
Butylbenzyl Phthalate(BBP)	1000
Di-(2-ethylhexyl) Phthalate(DEHP)	1000
Diisobutyl phthalate(DIBP)	1000

Disclaimers:

This XRF Screening report is for reference purposes only. The applicant shall make its/his/her own judgment as to whether the information provided in this XRF screening report is sufficient for its/his/her purposes. The result shown in this XRF screening report will differ based on various factors, including but not limited to, the sample size, thickness, area, surface flatness, equipment parameters and matrix effect (e.g. plastic, rubber, metal, glass, ceramic etc.). Further wet chemical pre-treatment with relevant chemical equipment analysis are required to obtain quantitative data.



**B. EU RoHS Directive 2011/65/EU with amendment (EU) 2015/863 on DBP, BBP, DEHP & DIBP content**

Test method:

Phthalates(DBP, BBP, DEHP &DIBP) Content:

Refer to IEC 62321-8:2017, by solvent extraction and analysis was performed by gas chromatography-mass spectrometer (GC-MS).

Test result(s):

1) Phthalates(DBP, BBP, DEHP &DIBP)

Tested Item(s)	MDL (mg/kg)	Test Result(s) (mg/kg)					Limit (mg/kg)
		(10)	(11)	(12)	(13)	(14)	
Dibutyl Phthalate(DBP) Content	50	N.D.	N.D.	N.D.	N.D.	N.D.	1000
Butylbenzyl Phthalate(BBP) Content	50	N.D.	N.D.	N.D.	N.D.	N.D.	1000
Di-(2-ethylhexyl) Phthalate(DEHP) Content	50	N.D.	N.D.	N.D.	N.D.	N.D.	1000
Diisobutyl phthalate(DIBP) Content	50	N.D.	N.D.	N.D.	N.D.	N.D.	1000

Tested Item(s)	MDL (mg/kg)	Test Result(s) (mg/kg)	Limit (mg/kg)
		(2+4+5+7+8+9)	
Dibutyl Phthalate(DBP) Content	50	N.D.	1000
Butylbenzyl Phthalate(BBP) Content	50	N.D.	1000
Di-(2-ethylhexyl) Phthalate(DEHP) Content	50	N.D.	1000
Diisobutyl phthalate(DIBP) Content	50	N.D.	1000

Tested Item(s)	MDL (mg/kg)	Test Result(s) (mg/kg)	Limit (mg/kg)
		(16+17+18+19+20+21)	
Dibutyl Phthalate(DBP) Content	50	N.D.	1000
Butylbenzyl Phthalate(BBP) Content	50	N.D.	1000
Di-(2-ethylhexyl) Phthalate(DEHP) Content	50	N.D.	1000
Diisobutyl phthalate(DIBP) Content	50	N.D.	1000

TRF-4-R-027 A/0



Shenzhen LCS Compliance Testing Laboratory Ltd.
 Add: 901, No.40 Building, Xialang Industrial Zone, Heshuikou Community, Matian Street, Guangming District, Shenzhen, Guangdong, China
 Tel: +(86) 0755-82591330 | E-mail: webmaster@lcs-cert.com | Web: www.lcs-cert.com
 Scan code to check authenticity



Tested Item(s)	MDL (mg/kg)	Test Result(s) (mg/kg)	Limit (mg/kg)
		(23+27+30+31+37+38)	
Dibutyl Phthalate(DBP) Content	50	N.D.	1000
Butylbenzyl Phthalate(BBP) Content	50	N.D.	1000
Di-(2-ethylhexyl) Phthalate(DEHP) Content	50	N.D.	1000
Diisobutyl phthalate(DIBP) Content	50	N.D.	1000

Tested Item(s)	MDL (mg/kg)	Test Result(s) (mg/kg)	Limit (mg/kg)
		(40+41+47+49+55+57)	
Dibutyl Phthalate(DBP) Content	50	N.D.	1000
Butylbenzyl Phthalate(BBP) Content	50	N.D.	1000
Di-(2-ethylhexyl) Phthalate(DEHP) Content	50	N.D.	1000
Diisobutyl phthalate(DIBP) Content	50	N.D.	1000

Tested Item(s)	MDL (mg/kg)	Test Result(s) (mg/kg)	Limit (mg/kg)
		(58+59+60+61+65+67)	
Dibutyl Phthalate(DBP) Content	50	N.D.	1000
Butylbenzyl Phthalate(BBP) Content	50	N.D.	1000
Di-(2-ethylhexyl) Phthalate(DEHP) Content	50	N.D.	1000
Diisobutyl phthalate(DIBP) Content	50	N.D.	1000

Tested Item(s)	MDL (mg/kg)	Test Result(s) (mg/kg)	Limit (mg/kg)
		(69+71+72+73+74+75)	
Dibutyl Phthalate(DBP) Content	50	N.D.	1000
Butylbenzyl Phthalate(BBP) Content	50	N.D.	1000
Di-(2-ethylhexyl) Phthalate(DEHP) Content	50	N.D.	1000
Diisobutyl phthalate(DIBP) Content	50	N.D.	1000

TRF-4-R-027 A/0



Shenzhen LCS Compliance Testing Laboratory Ltd.
 Add: 901, No.40 Building, Xialang Industrial Zone, Heshuikou Community, Matian Street, Guangming District, Shenzhen, Guangdong, China
 Tel: +(86) 0755-82591330 | E-mail: webmaster@lcs-cert.com | Web: www.lcs-cert.com
 Scan code to check authenticity



Tested Item(s)	MDL (mg/kg)	Test Result(s) (mg/kg)	Limit (mg/kg)
		(76+78+81+82+84+85)	
Dibutyl Phthalate(DBP) Content	50	N.D.	1000
Butylbenzyl Phthalate(BBP) Content	50	N.D.	1000
Di-(2-ethylhexyl) Phthalate(DEHP) Content	50	N.D.	1000
Diisobutyl phthalate(DIBP) Content	50	N.D.	1000

Tested Item(s)	MDL (mg/kg)	Test Result(s) (mg/kg)	Limit (mg/kg)
		(87+88+89+90+92+95)	
Dibutyl Phthalate(DBP) Content	50	N.D.	1000
Butylbenzyl Phthalate(BBP) Content	50	N.D.	1000
Di-(2-ethylhexyl) Phthalate(DEHP) Content	50	N.D.	1000
Diisobutyl phthalate(DIBP) Content	50	N.D.	1000

Tested Item(s)	MDL (mg/kg)	Test Result(s) (mg/kg)	Limit (mg/kg)
		(96+98+99+100+101+102)	
Dibutyl Phthalate(DBP) Content	50	N.D.	1000
Butylbenzyl Phthalate(BBP) Content	50	N.D.	1000
Di-(2-ethylhexyl) Phthalate(DEHP) Content	50	N.D.	1000
Diisobutyl phthalate(DIBP) Content	50	N.D.	1000

Tested Item(s)	MDL (mg/kg)	Test Result(s) (mg/kg)	Limit (mg/kg)
		(104+105+107+110)	
Dibutyl Phthalate(DBP) Content	50	N.D.	1000
Butylbenzyl Phthalate(BBP) Content	50	N.D.	1000
Di-(2-ethylhexyl) Phthalate(DEHP) Content	50	N.D.	1000
Diisobutyl phthalate(DIBP) Content	50	N.D.	1000

TRF-4-R-027 A/0



Shenzhen LCS Compliance Testing Laboratory Ltd.
 Add: 901, No.40 Building, Xialang Industrial Zone, Heshuikou Community, Matian Street, Guangming District,
 Shenzhen, Guangdong, China
 Tel: +(86) 0755-82591330 | E-mail: webmaster@lcs-cert.com | Web: www.lcs-cert.com
 Scan code to check authenticity

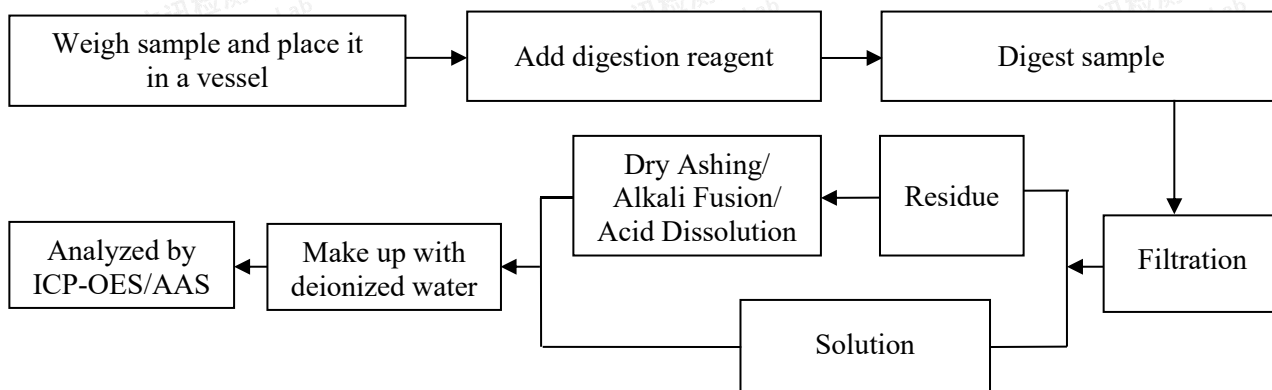


Note:

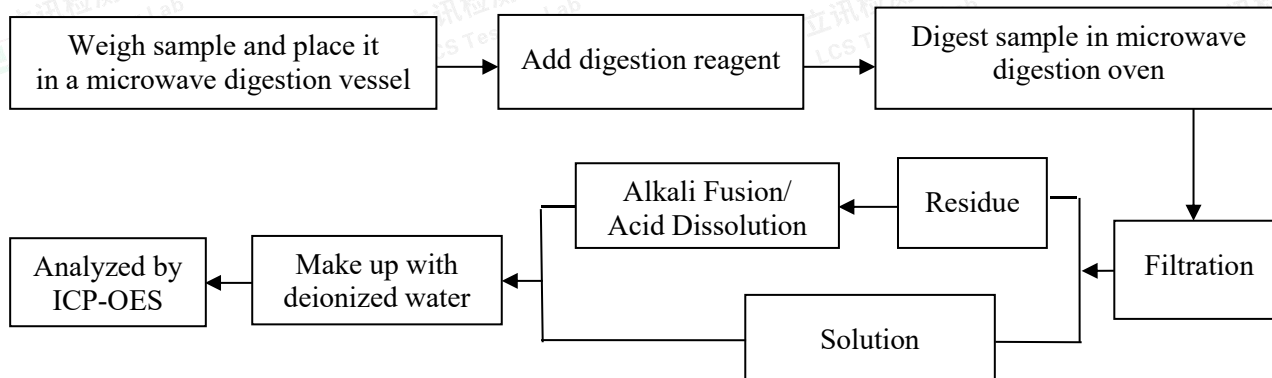
- MDL = Method Detection Limit
- N.D. = Not Detected (<MDL)
- mg/kg= milligram per kilogram=ppm
- According to customer's requirement, only the appointed materials have been tested.

Test Process

1. Lead(Pb) & Cadmium(Cd): IEC 62321-5:2013

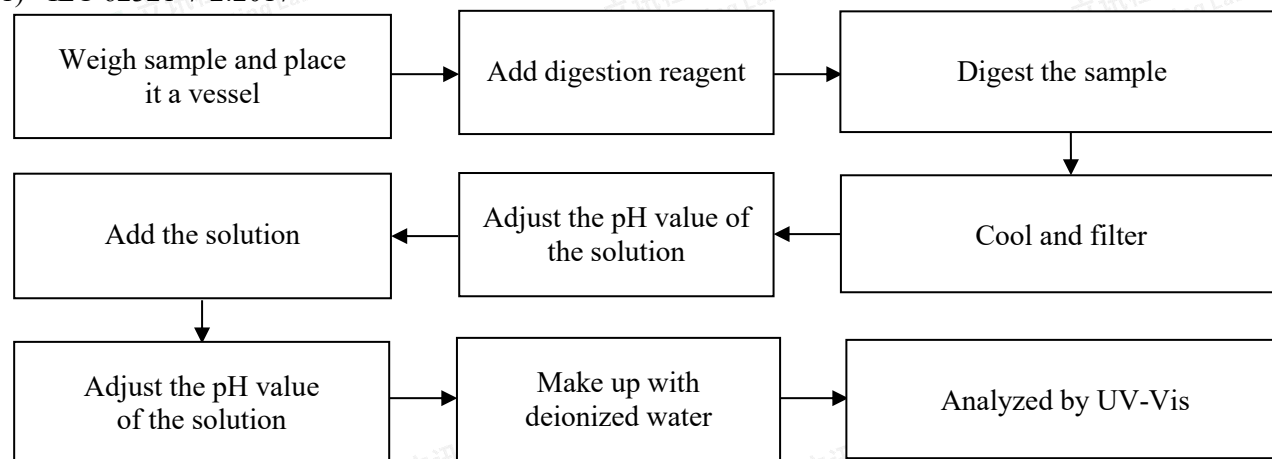


2. Mercury(Hg): IEC 62321-4:2013+AMD1:2017 CSV



3. Hexavalent Chromium(Cr(VI))

1) IEC 62321-7-2:2017

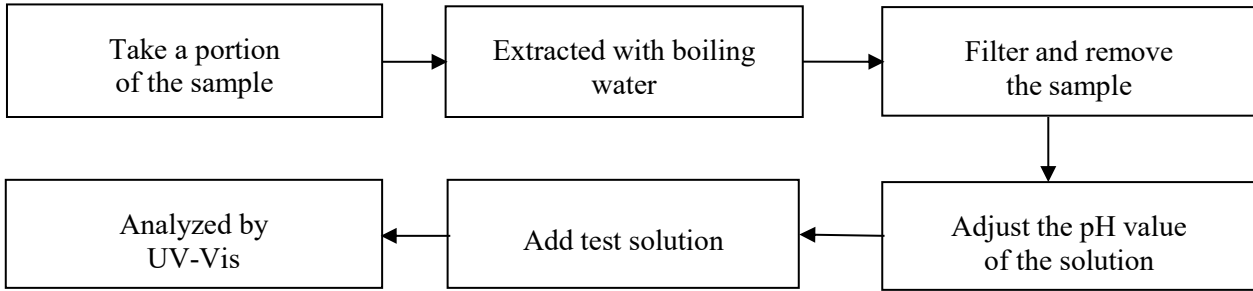


TRF-4-R-027 A/0

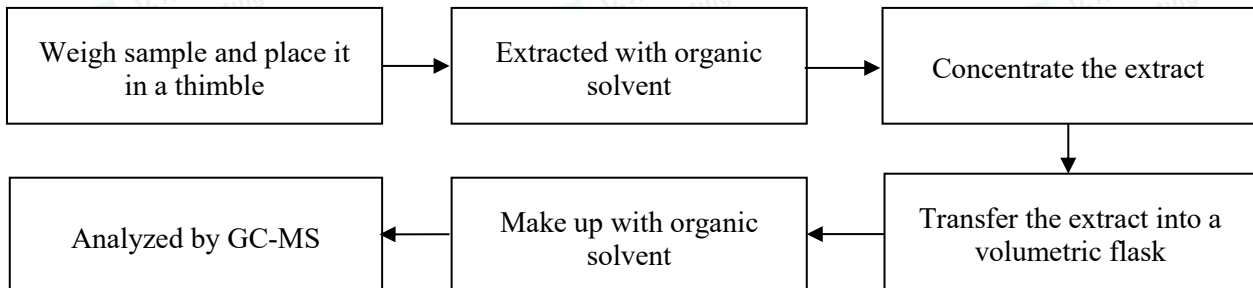




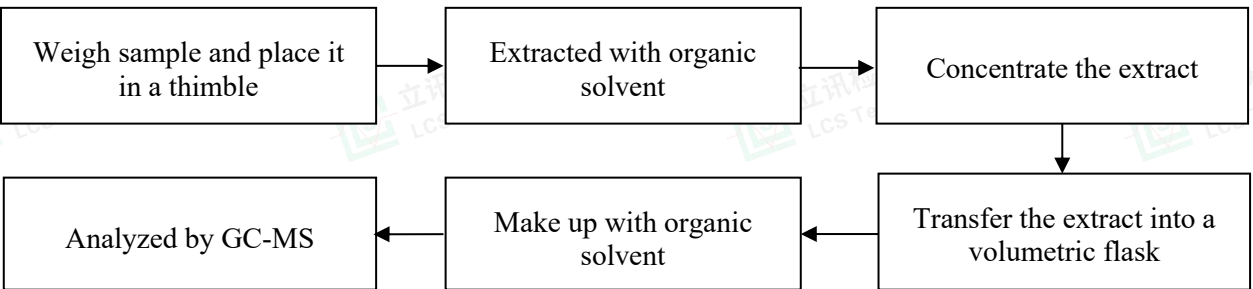
2) IEC 62321-7-1:2015



4. Polybrominated Biphenyls(PBBs) & Polybrominated Diphenyl Ethers(PBDEs) : IEC 62321-6:2015



5. Phthalates(DBP, BBP, DEHP & DIBP) : IEC 62321-8:2017



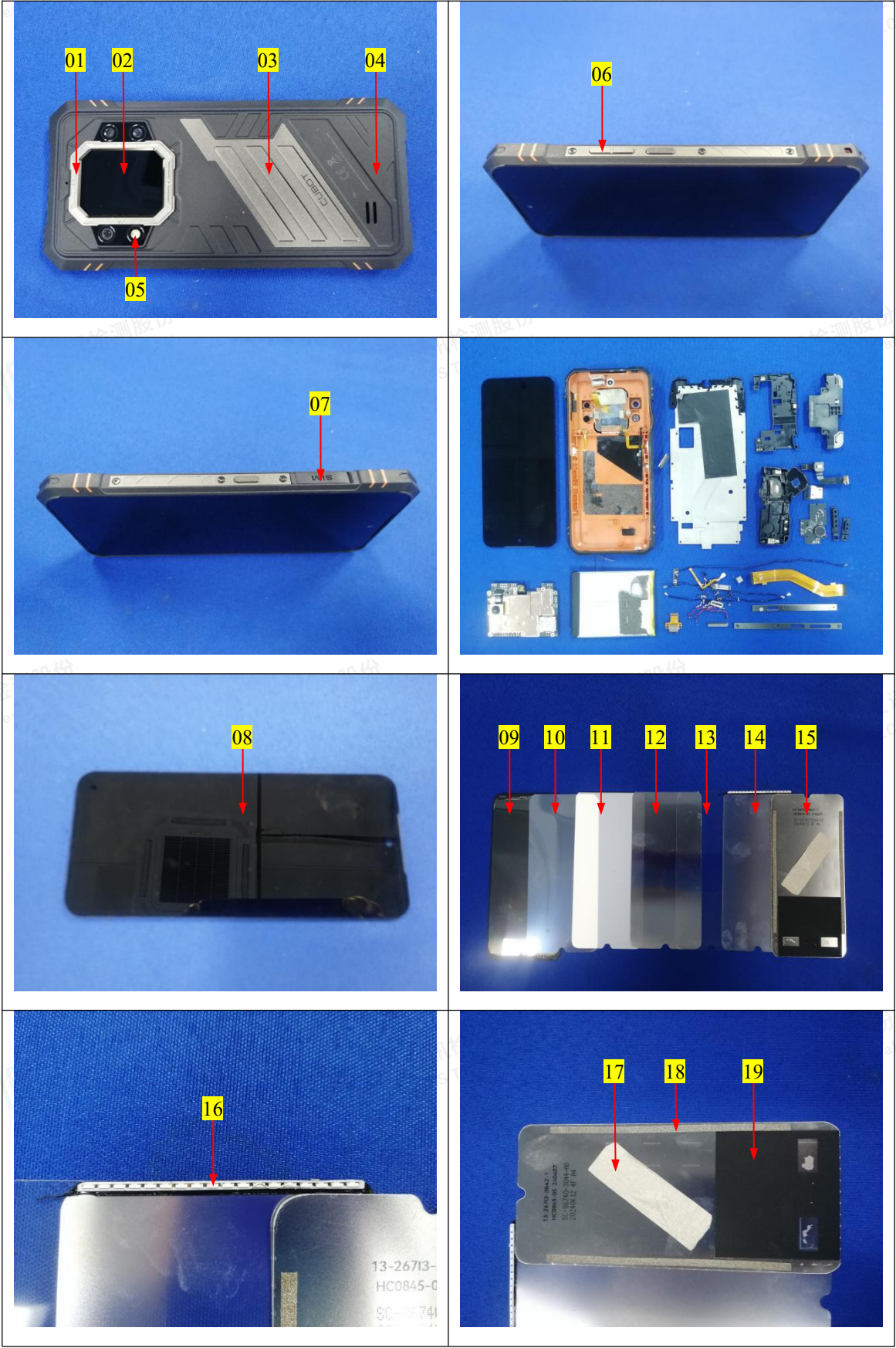


The photo(s) of the sample



TRF-4-R-027 A/0

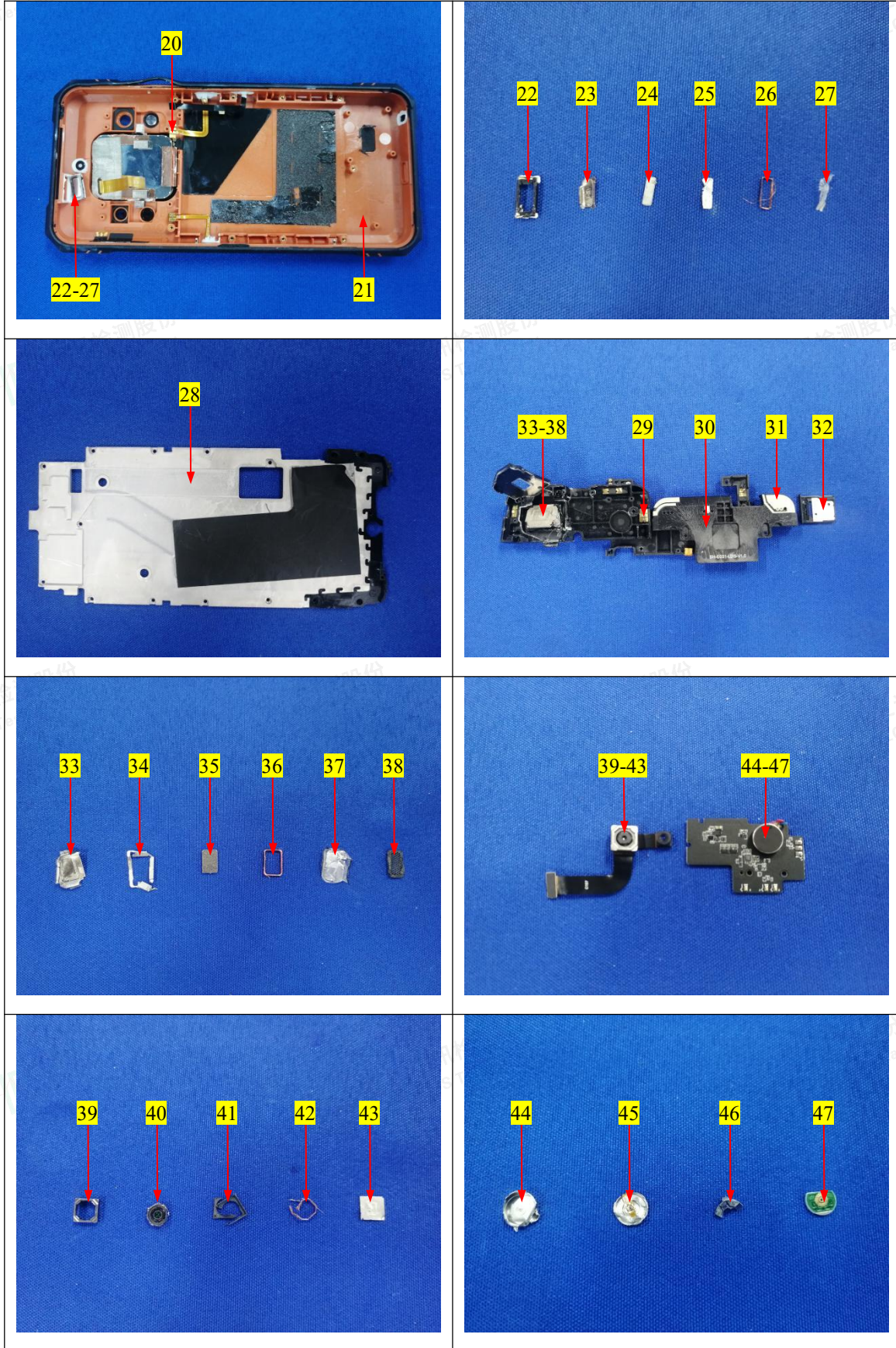




TRF-4-R-027 A/0



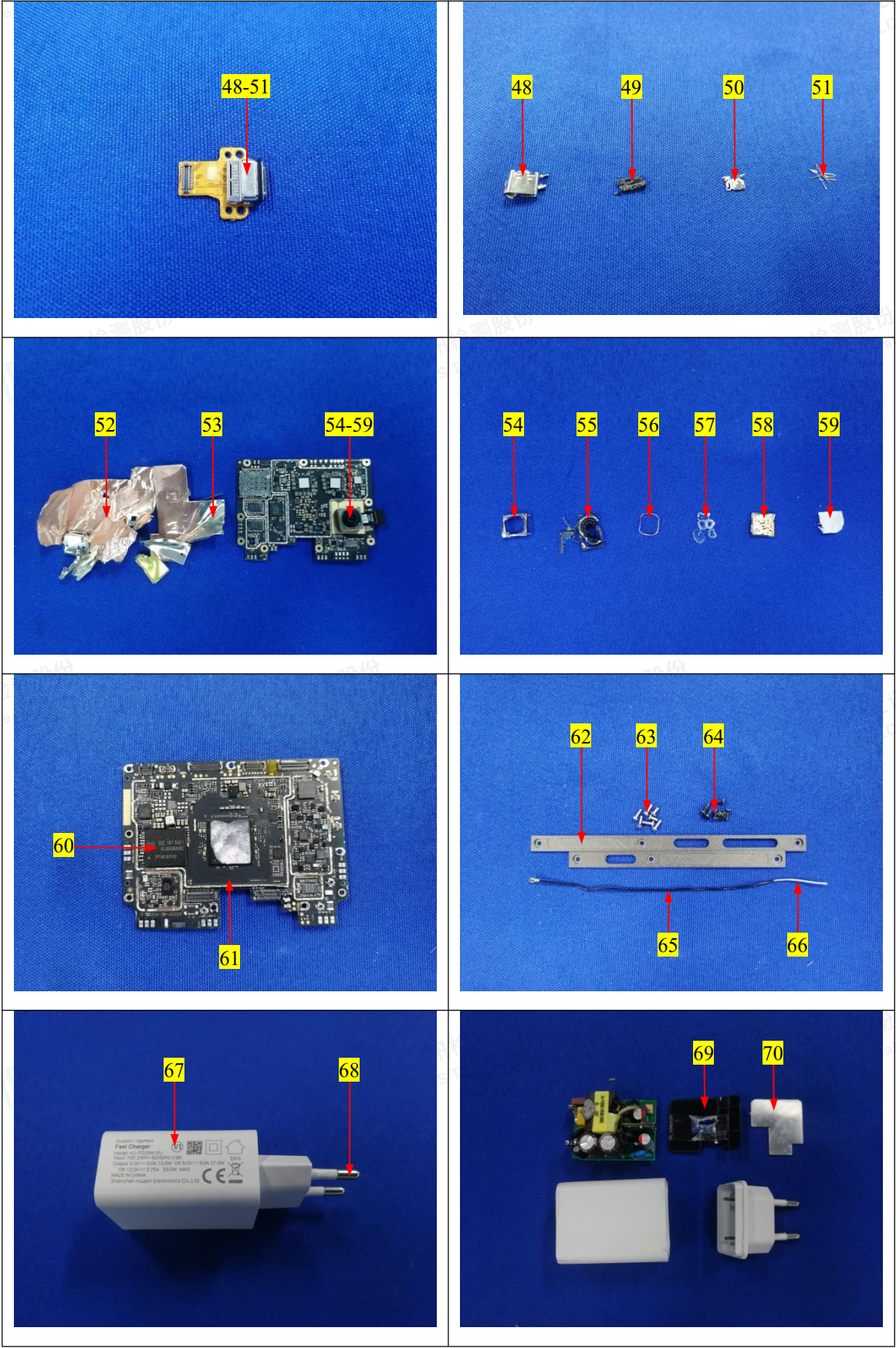
Shenzhen LCS Compliance Testing Laboratory Ltd.
 Add: 901, No.40 Building, Xialang Industrial Zone, Heshuikou Community, Matian Street, Guangming District, Shenzhen, Guangdong, China
 Tel: +(86) 0755-82591330 | E-mail: webmaster@lcs-cert.com | Web: www.lcs-cert.com
 Scan code to check authenticity



TRF-4-R-027 A/0



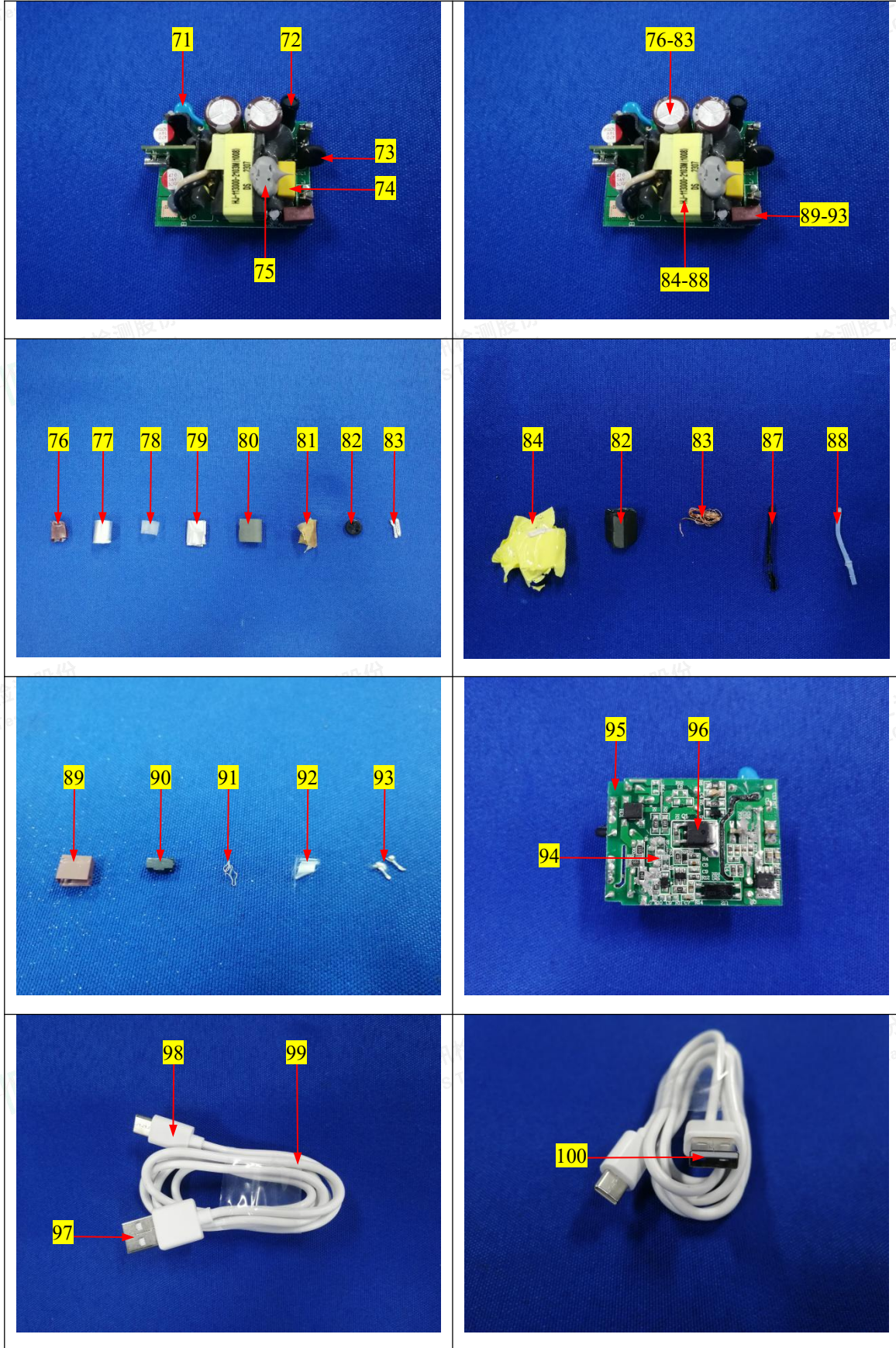
Shenzhen LCS Compliance Testing Laboratory Ltd.
 Add: 901, No.40 Building, Xialang Industrial Zone, Heshuikou Community, Matian Street, Guangming District, Shenzhen, Guangdong, China
 Tel: +(86) 0755-82591330 | E-mail: webmaster@lcs-cert.com | Web: www.lcs-cert.com
 Scan code to check authenticity



TRF-4-R-027 A/0



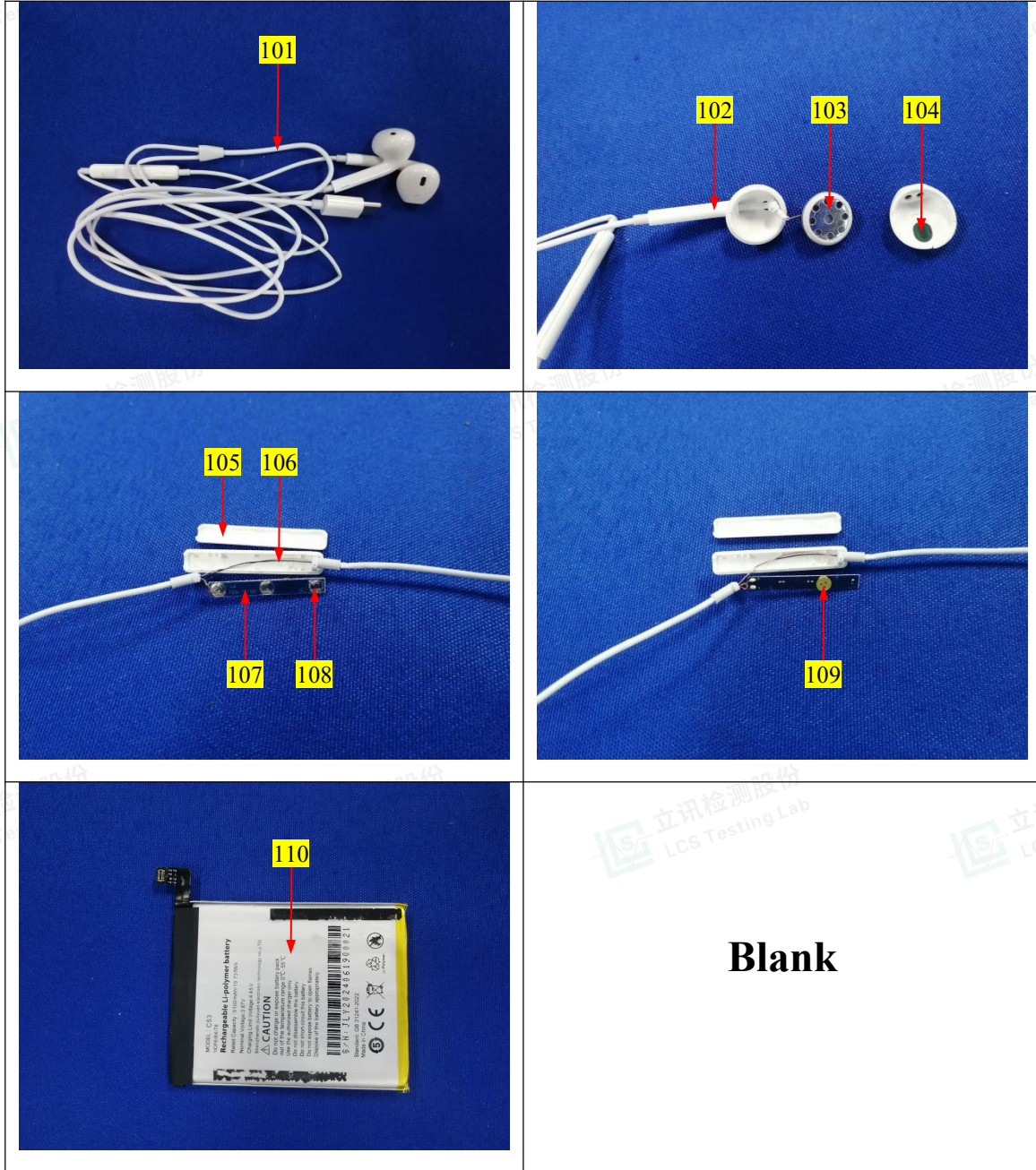
Shenzhen LCS Compliance Testing Laboratory Ltd.
 Add: 901, No.40 Building, Xialang Industrial Zone, Heshuikou Community, Matian Street, Guangming District, Shenzhen, Guangdong, China
 Tel: +(86) 0755-82591330 | E-mail: webmaster@lcs-cert.com | Web: www.lcs-cert.com
 Scan code to check authenticity



TRF-4-R-027 A/0



Shenzhen LCS Compliance Testing Laboratory Ltd.
 Add: 901, No.40 Building, Xialang Industrial Zone, Heshuikou Community, Matian Street, Guangming District, Shenzhen, Guangdong, China
 Tel: +(86) 0755-82591330 | E-mail: webmaster@lcs-cert.com | Web: www.lcs-cert.com
 Scan code to check authenticity



**Statement:**

1. The test report is invalid without the signature of the approver and the special seal for the company's report;
2. The company name, address and sample information shown on the report were provided by the applicant who should be responsible for the authenticity which are not verified by LCS;
3. The test results in this report are only responsible for the tested samples;
4. Without written approval of LCS, this report can't be reproduced except in full;
5. In case of any discrepancy between the corresponding Chinese and English contents in the test report, the Chinese version shall prevail.

*** End of Report ***

